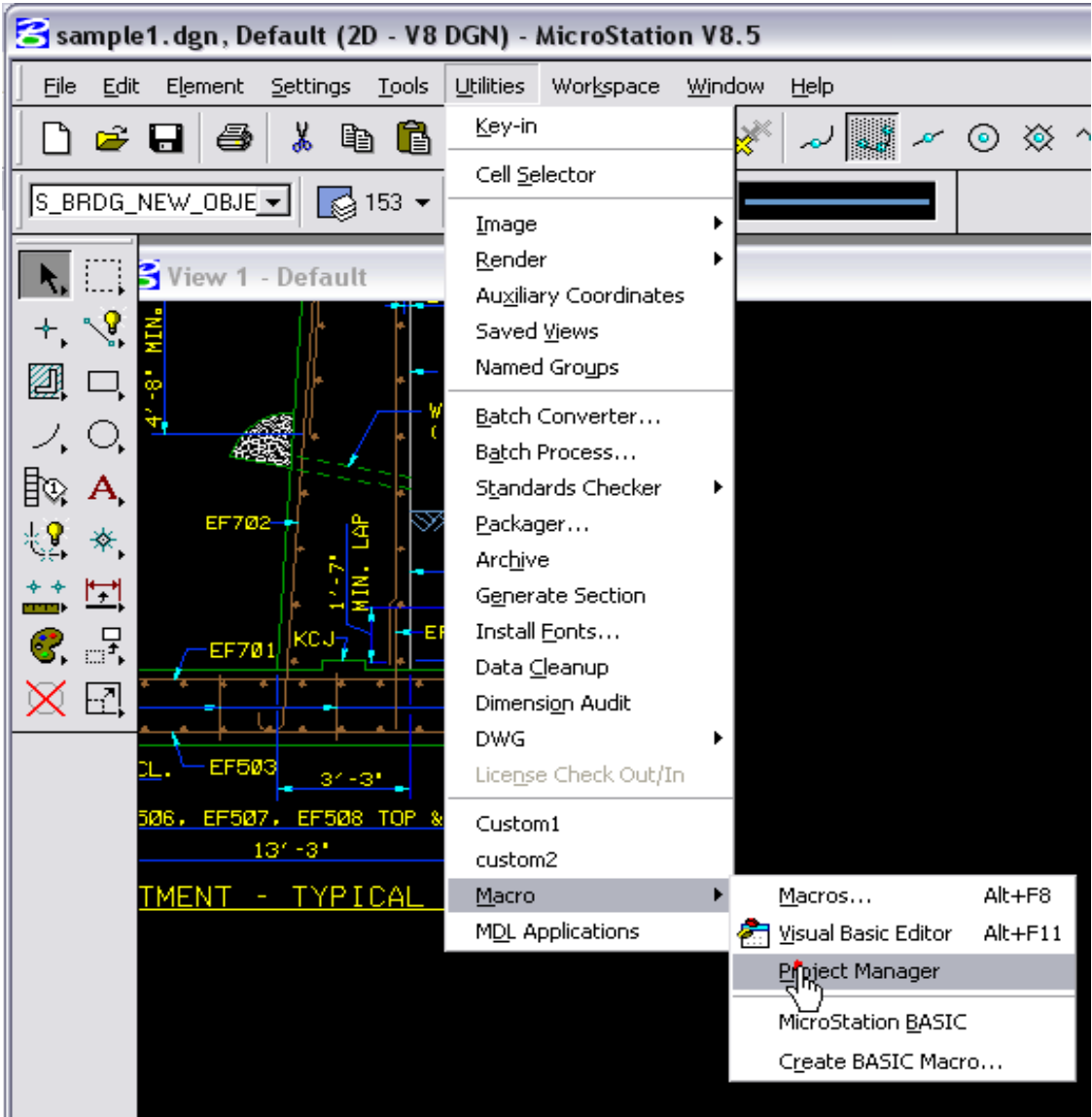


Starting Drawing Scale MicroStation Macro - Method 1

Step-by-step Instructions

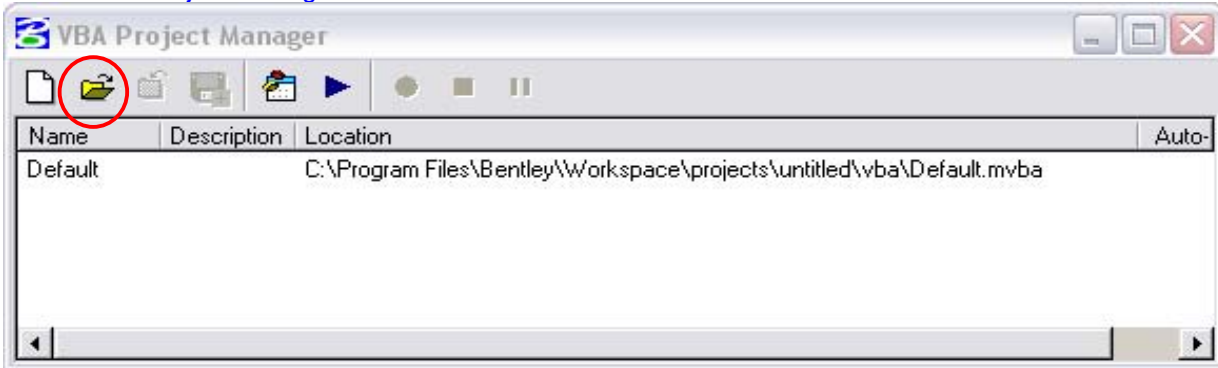
Step 1

Navigate to [Utilities/Macro/Project Manager](#) and click [Project Manager](#)



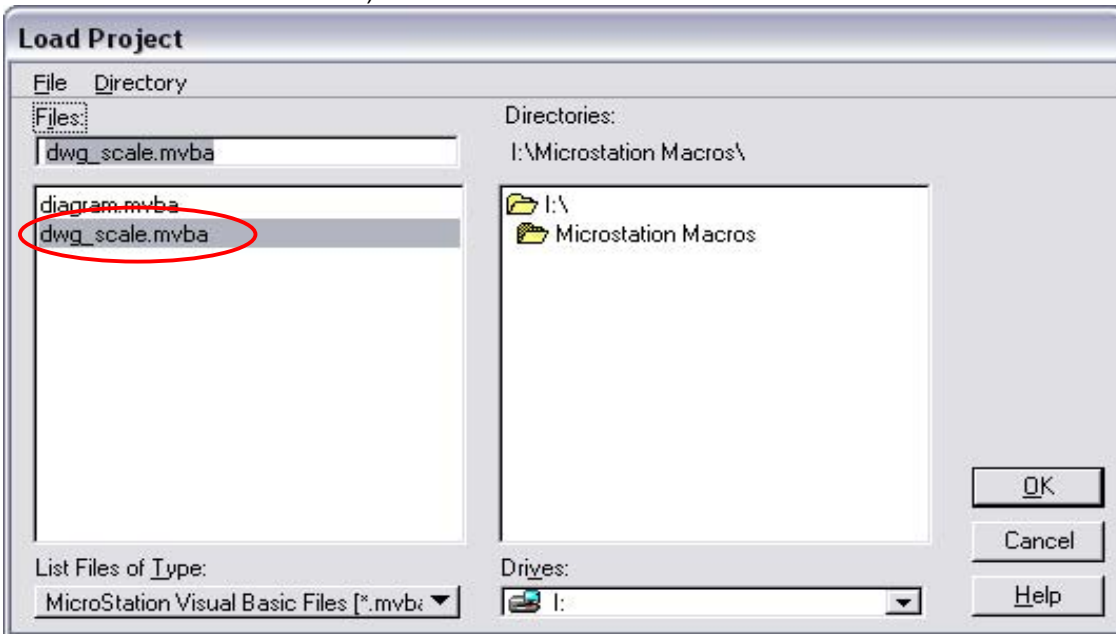
Step 2

In the **VBA Project Manager** click the folder icon



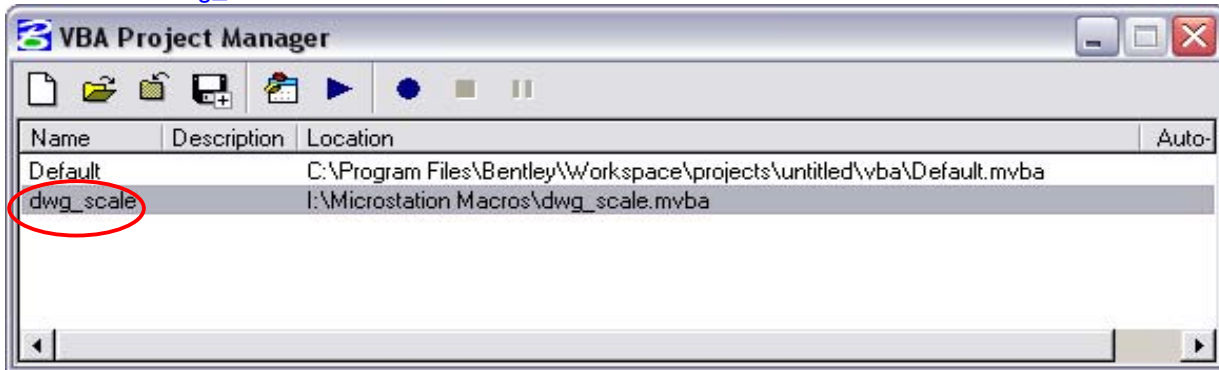
Step 3

Locate installed macro file **dwg_scale.mvba** and click **OK** (actual file location may differ from the location shown below)



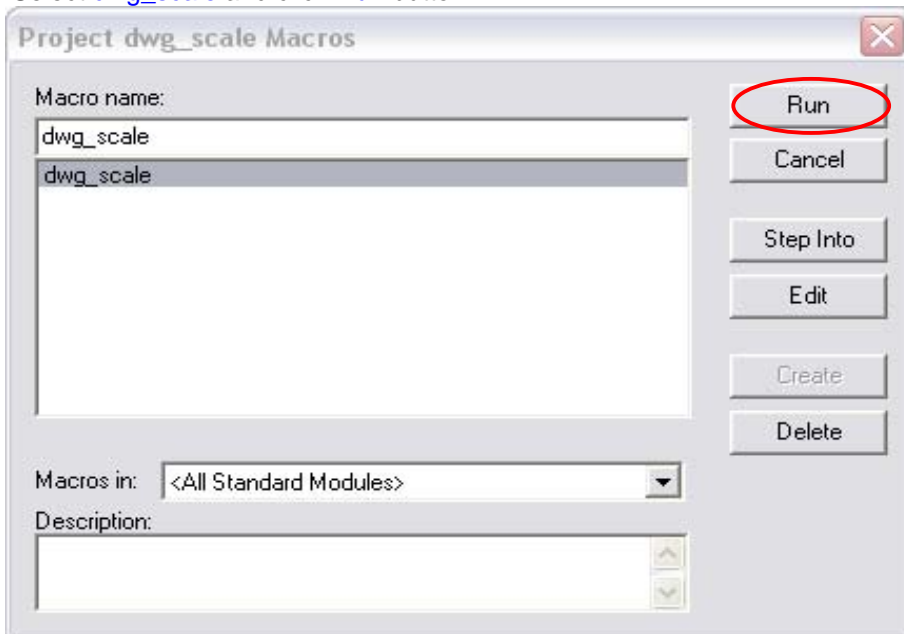
Step 4

Double-click `dwg_scale`



Step 5

Select `dwg_scale` and click `Run` button

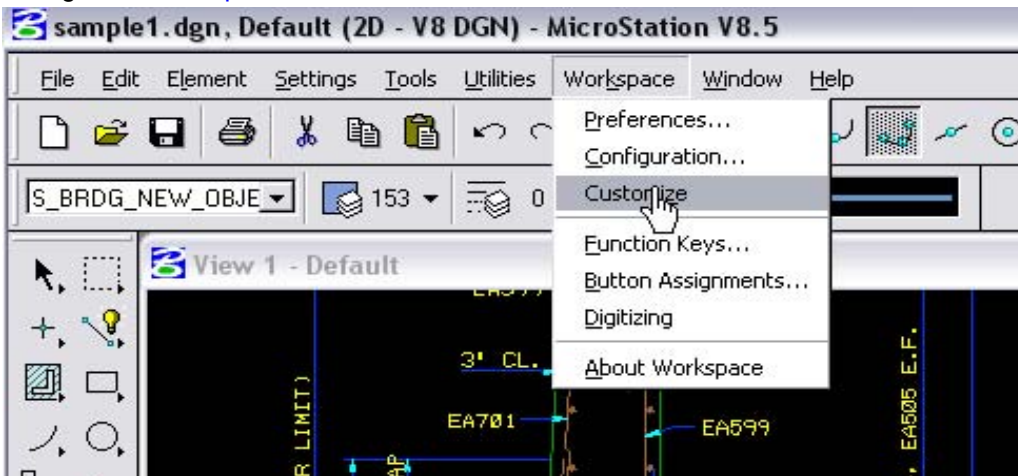


Starting Drawing Scale MicroStation Macro - Method 2

In this method, the macro is assigned to the new menu item inserted in the Microstation menu at the top of the application screen. The following step-by-step procedure shows how to insert and configure new menu item in the [Utilities](#) menu to run a macro

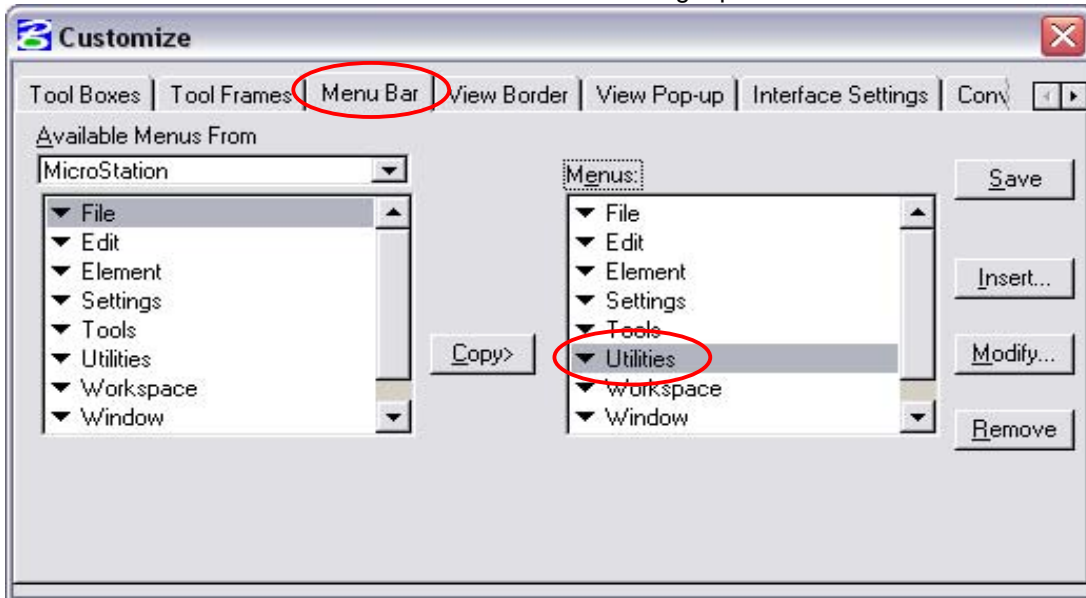
Step 1

Navigate to [Workspace/Customize](#) and click [Customize](#)



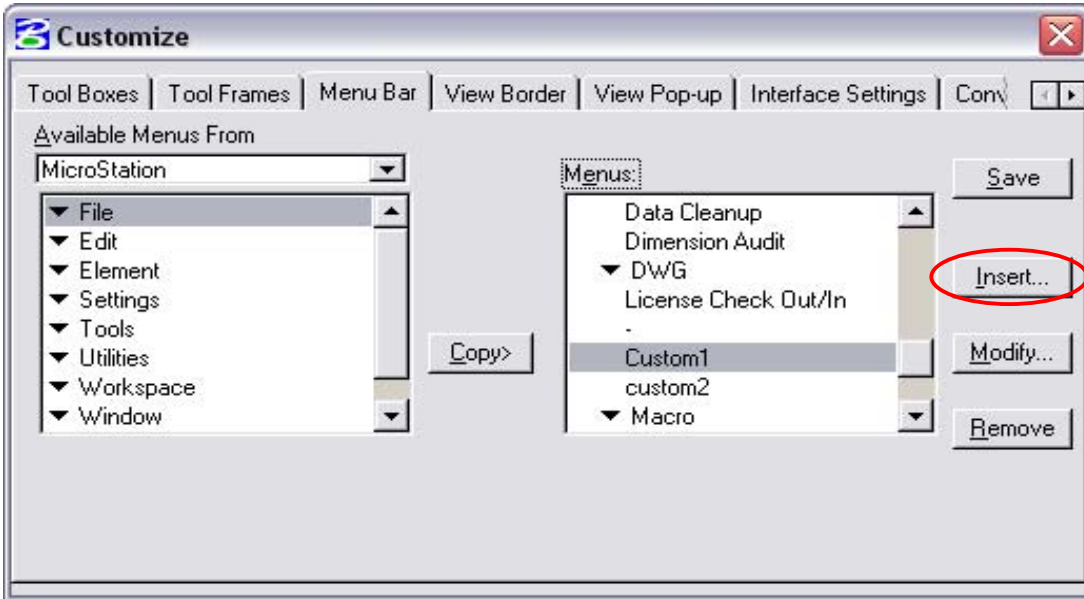
Step 2

Click the [Menu Bar](#) Tab and double-click [Utilities](#) in the right pane



Step 3

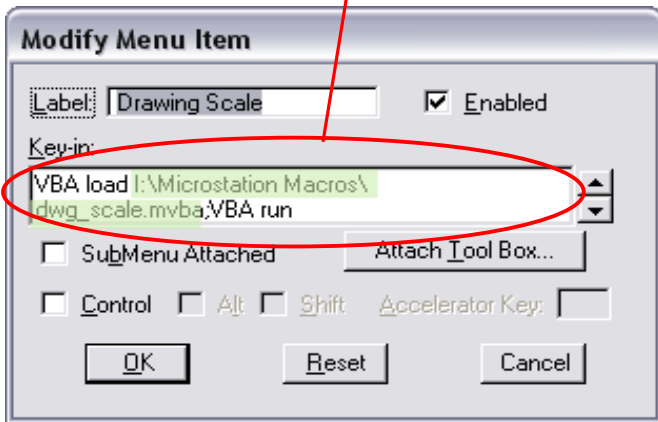
Scroll down to the existing menu item above which a new menu item to be inserted and click **Insert** button



Step 4

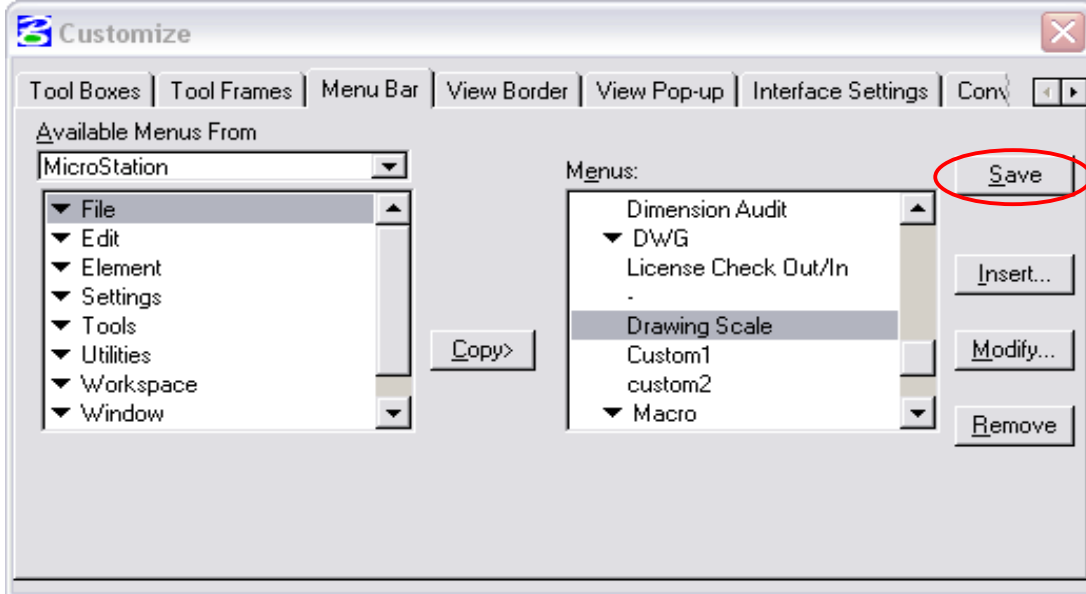
Type in (or paste using right click mouse menu) text in the **Label** and **Key-in** text fields. **Key-in** text should be exactly as shown below (bottom part of the text is hidden in the dialog box below) except use actual full file path for the macro file **dwg_scale.mvba**. Click **OK**.

```
VBA load I:\Microstation Macros\dwg_scale.mvba;VBA run [dwg_scale]Module1.dwg_scale
```



Step 5

Click [Save](#) button



Note:

To edit text entered in step 4, repeat steps 1 and 2, select the label of the menu item to be edited and click [Modify...](#)